

**Description of basic version**

**pilot light**

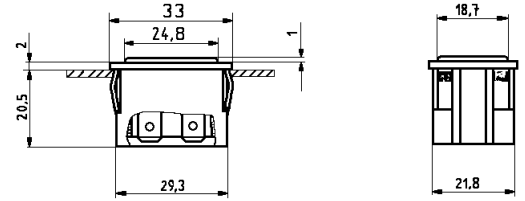
window (flat)  
PC red  
housing PA black  
socket PA white  
glow lamp + Rv for 230V~

additional printing switch:  
production year/weak  
according to DIN EN 60062



**1667.0101**

**plug-in terminal 6,3**



suitable for appliances  
protection class II



snap-on fixing for panel  
thickness of 0,75 ... 3,0 mm

panel thickr	length of cut-out	width of cut-out
0,75 - 1,0	30 + 0,1	22,2 + 0,2
1,0 - 1,5	30,2 + 0,1	22,2 + 0,2
1,5 - 3,0	30,4 + 0,1	22,2 + 0,2

**electrical rating and approval marks**

**printed:**  
230V~ T 85° C

**not printed:**

**switching functions**

**pilot light**

**window designs**

**remarks**

