



rocker switch

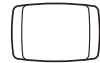
description of basic version

single pole DT-switch
with OFF-position in middle
rocker and housing PA white
base plate made of epoxy resin (only at solder terminals)
contact pairing Ag/Cu silver-pated
terminals silver-pated

contact type: delamination contact

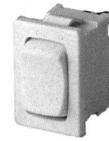
life endurance mech : 50.000
electr 6(2) : 10.000
30mA 12V : 50.000

suitable for appliances
of protection class II

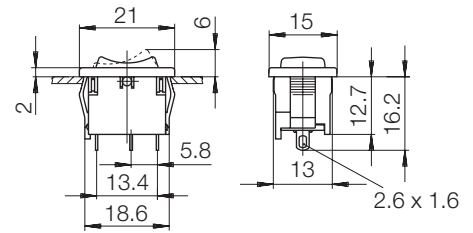


1a 1 1b

solder terminal



1808.



panel thickr	length of cut-out	width of cut-out
0,75 - 1,25	19,2 - 0,1	12,9 + 0,1
1,25 - 2	19,4 - 0,1	12,9 + 0,1
2 - 3	19,8 - 0,1	12,9 + 0,1

snap-on fixing for panel thickness of 0,75...3,0 mm

electrical rating and approval marks

printed (injected):

6(2)/250~ T 100/55 μ
6A 125-250V AC 1/8 HP R 58

electrical data
deviating from this
will be printed

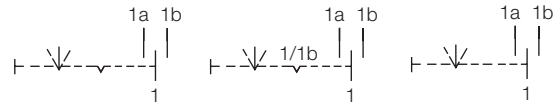
not printed:

switching function

DT-switch with OFF-position in middle

**momentary
one-sided**

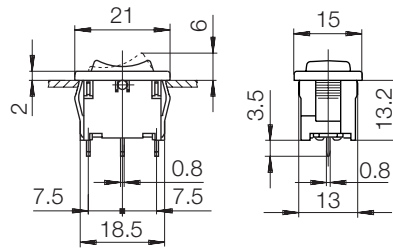
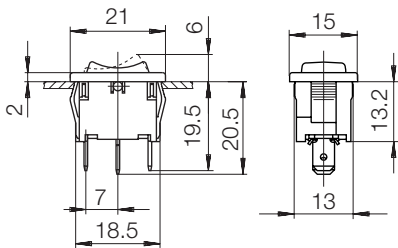
**momentary
bilateral**



terminal versions:








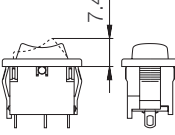
plug-in (P-I) terminal 4,8

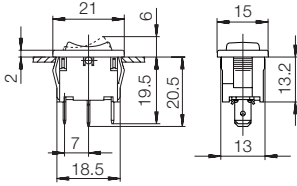



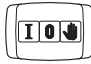


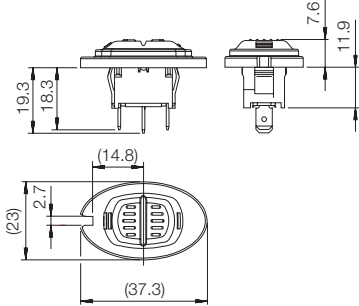
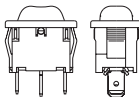
PCB terminal

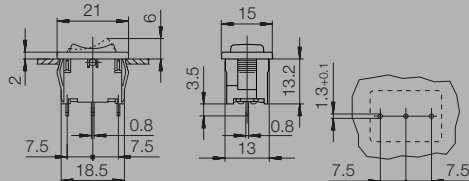
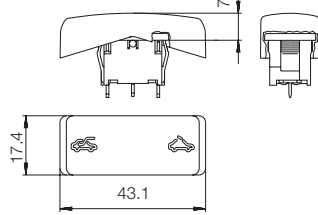


remarks



product No	kind of terminal	Po	S F	tolerances to basic version
0102 x	solder			rocker and housing black
0111 x	solder			rocker black marking white housing black 
0112 x	solder			rocker black marking white housing black 
0118	solder			rocker black marking white housing black contact pairing Ag/Ag  $6(2)/250\sim T 100/55 \mu$  10A 125-250V AC 1/8 HP 125V AC R 88  1/4 HP 250V AC
0125	solder			rocker red marking white housing black contact with cross rib  without version and rating printing
0202 x	solder		*	rocker and housing black * momentary function one-sided
0302 x	solder		*	rocker and housing black * momentary function bilateral
0309	solder		*	rocker and housing black V0-material marking white * momentary function bilateral 
0323	solder		*	housing black * momentary function bilateral
0324	solder		*	rocker red similar to RAL 3013 housing black * momentary function bilateral
0352	solder		*	rocker and housing black 30 mA 12 V 5 E 4 T 100/55 μ contact pairing Ag gold-plated/Cu gold-plated terminals gold-plated * momentary function bilateral
0602	solder		*	rocker in special design black housing black * momentary function one-sided 

product No	kind of terminal	Po	S F	tolerances to basic version
1101 x	P-I 4,8			
1102 x	P-I 4,8			rocker and housing black additional printing packing: 138 100-00
1103 x	P-I 4,8			rocker and housing black marking white 
1111	P-I 4,8			rocker and housing black marking light grey similar to RAL 7035  additional printing packing: 5750177267
1112	P-I 4,8			rocker and housing black marking light grey similar to RAL 7035  additional printing packing: 5750180697
1113	P-I 4,8			rocker red similar to RAL 3013 housing black
1119	P-I 4,8			rocker and housing black marking white  Do not offer any more!
1120	P-I 4,8			rocker and housing black marking white 
1202 x	P-I 4,8		*	rocker and housing black * momentary function one-sided
1302 x	P-I 4,8		*	rocker and housing black * momentary function bilateral
1307	P-I 4,8		*	rocker and housing black marking white  * momentary function bilateral
1402 Y+ (01088) USA	P-I 4,8			rocker and housing black with dust protection cap in PP-material orange in special design  Do not offer any more!
1601 Y+ (14739)	P-I 4,8			rocker black in special design housing black  without version and rating printing additional printing packing: 1313.5.01801 Only replacement demand!

product No	kind of terminal	Po	S F	tolerances to basic version
2102 x	PCB			rocker and housing black bearing terminal fire-tinned 
2302 x	PCB		*	rocker and housing black bearing terminal fire-tinned * momentary function bilateral
2401 Y+ (47580)	PCB		*	rocker in special version grau with symbols for backlighted symbols bearing terminal fire-tinned * momentary function bilateral without version and rating printing additional printing packing: 146 385-00 
2402 Y+ (47580)	PCB		*	similar to .2401 rocker beige * momentary function bilateral without version and rating printing Only replacement demand! additional printing packing: 146 385-01
2403 Y+ (10069)	PCB		*	similar to .2401 rocker arena * momentary function bilateral without version and rating printing additional printing packing: 146 385-02
2704	PCB			rocker and housing pearl grey (824 083) mounting depth 29,6 