

FK technics, spol s.r.o.
Koněvova 1883 / 62,
130 00 Praha 3

www.fkt.cz

LED PANEL LIGHT Item No.: LED REC-3030 5500



| Made by | Checked by | Version |
|-------------|------------|---------|
| Hongde Wang | Melon Hu | A2 |



LED Panel Light

Features:

- Super-thin, super-light and super-brightness.
- New design of optical configuration with high brightness, equal emitting surface, no flare, no flash and high efficiency for energy saving.
- Adapting current circuit design with stable working, reliable effect.
- Using optical panel material to improve the efficiency of light. High-thermal conductivity aluminum alloy to improve the efficiency of heat conduction.
- Perfect quality SMD, LED as light source with high light efficiency, speed activate, long lifetime.
- No noise and flash when working and frequent activation no affect light source.
- Warm white, natural white and cool white for choosing according to customer's requirements.
- Beautiful, super- light design, and convenient installation.
- Long-life using can lower maintain cost.
- Different installation for choosing as customer's requested.

Real Product Photo



FK technics, spol s.r.o.
Koněvova 1883 / 62,
130 00 Praha 3

www.fkt.cz

LED panel light specifications:

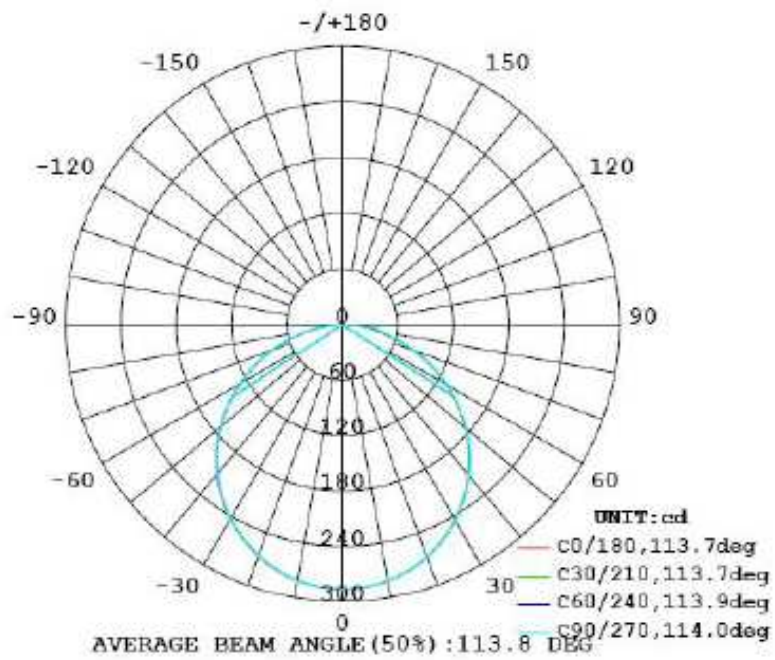
| LED PANEL SPECIFICATIONS | | |
|--------------------------|-----------------------|-----------------------------------|
| NUMBER | ITEM | DESCRIPTION |
| 1 | Input voltage | AC 100~240V |
| 2 | Panel Input | DC:8-12V , Constant Current:1.05A |
| 3 | Power consumption | 13W |
| 4 | luminous flux | Ra>70 833lm, Ra>80 714lm |
| 5 | Color | White |
| 6 | Color temperature | 2800-6000K |
| 7 | Life time | >50,000 Hour |
| 8 | Operating temperature | -20°C to + 50°C |
| 9 | Storage temperature | -30°C to + 60°C |
| 10 | Certificates | CE RoHS FCC |
| 11 | Size | 295*295*8.5 mm |
| 12 | Protection Grade | IP20 |



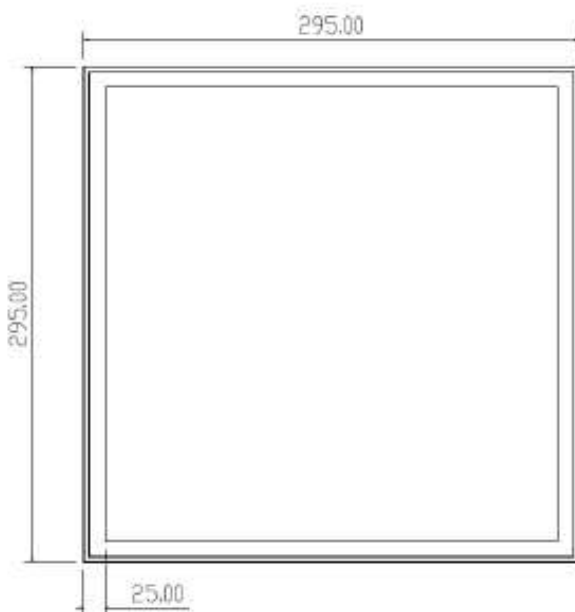
FK technics, spol s.r.o.
Koněvova 1883 / 62,
130 00 Praha 3

www.fkt.cz

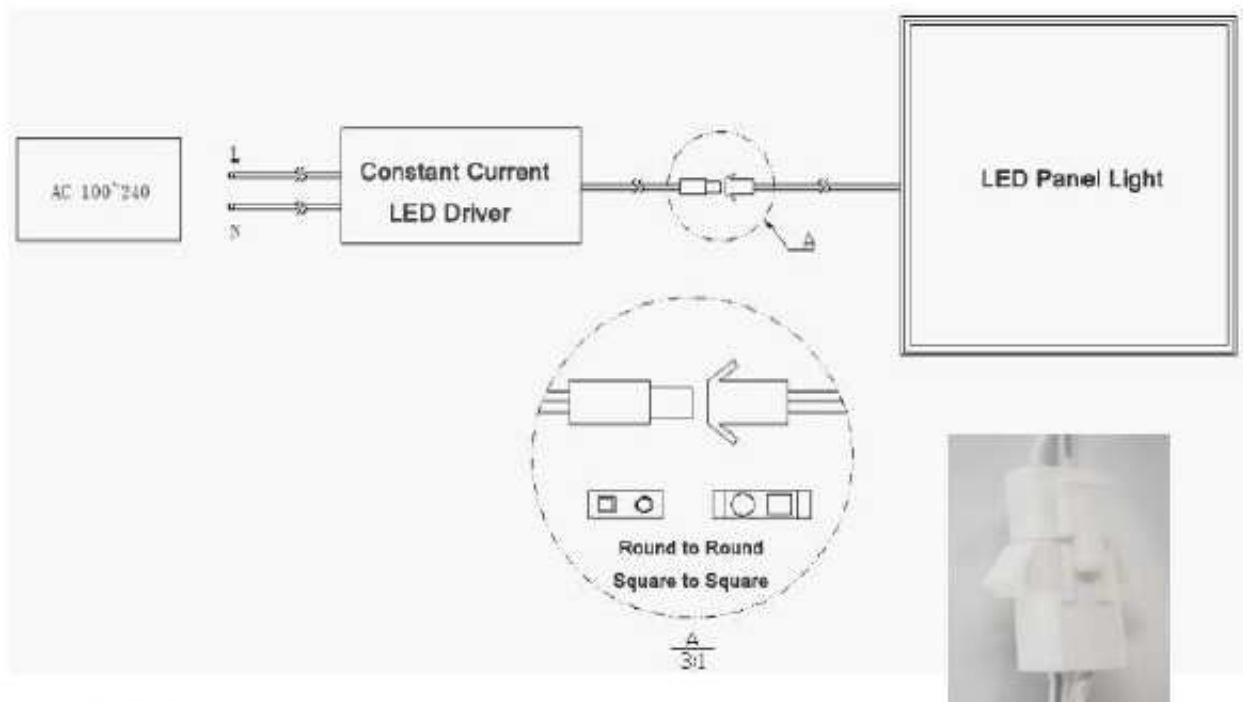
Light Distribution Graph



Panel Size:



Electrical connection diagram:



Installation:

1. Built-in installation

- Remove the ceiling where the LED driver and the panel light will be installed.
- Connect the Power Supply Cable.
- Carefully insert the LED panel light Along the diagonal direction into the removed ceiling.
- Turn on the AC power to light up the LED panel light.

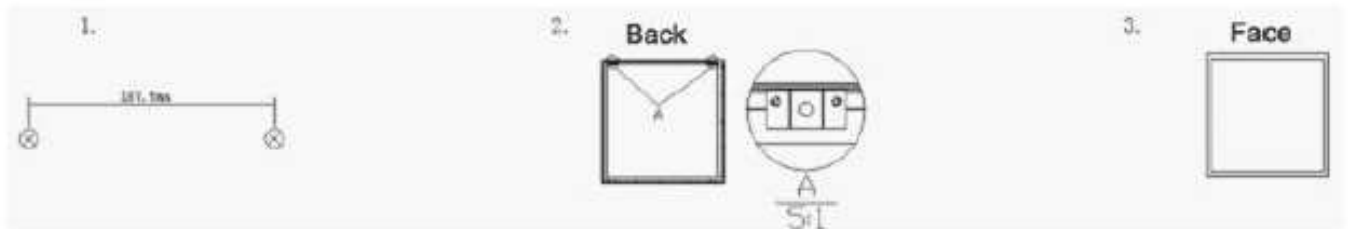


FK technics, spol s.r.o.
Koněvova 1883 / 62,
130 00 Praha 3

www.fkt.cz

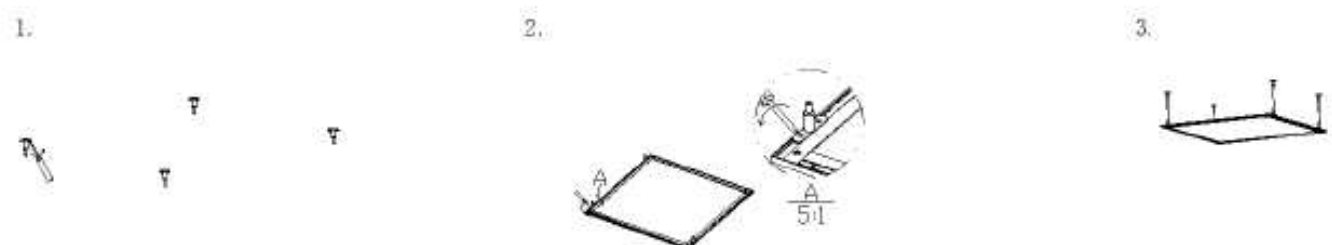
2. Wall surface mounted

- Install two screws on the wall, center distance as 187.5mm.
- Lock the hoist clamps into the panel light.
- Put the power supply on the wall or hide it dark channel.
- Put the panel light on the screws and adjust in proper position, then connect the power.



Pendant installation

- Lock the upper line locks on the roof
- Lock the underneath line locks on the panel light.
- Connect the upper and underneath line locks via steel wire rope, adjust the length, then connect the power.

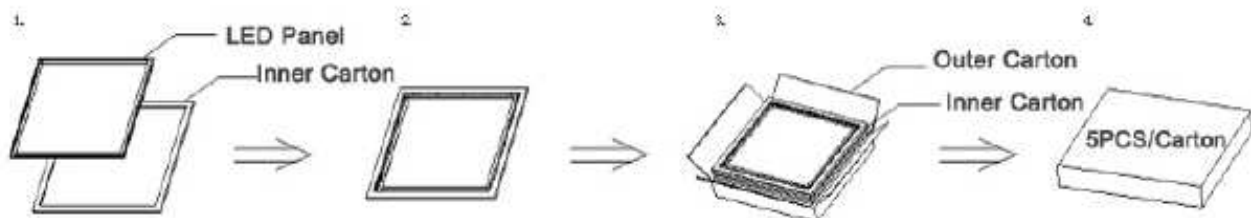


FK technics, spol s.r.o.
Koněvova 1883 / 62,
130 00 Praha 3

www.fkt.cz

Package

| 5pcs/Carton | | |
|-------------|-----|--|
| Quantity | pcs | each piece in inner box and 5 pcs/carton |
| Weight | KG | 6.0 |
| Inner plate | mm | 360x360x15 |
| Out carton | mm | 380x380x110 |



Attention

- ❖ Please be gentle when take out the product, in order to prevent scratch the surface.
- ❖ Please use screwdriver screw by hand,don't use the electrical screwdriver.
- ❖ Please stay away from fire or high temperature object when product installation.
- ❖ Please turn off the power before clean the lighting use dry dishcloth to wipe.
- ❖ Power supply, controller, tieline etc, to support our company's product, don't match others model.
- ❖ Let the children away from the product.
- ❖ When install or use the product meet the problem,pls ask the professional to maintain it and don't take apart the product without authorization.

