



SERIES 1115 - SINGLE-POLE PUSHBUTTON SWITCHES

TO 16 (4) A 400 V AC






PRODUCT FEATURES

- Double lifting contact system
- Contact distance > 3 mm
- Actuator can be approached from all directions
- Normally open-, Normally closed- and combined (changeover) version

ON REQUEST

- Customized versions
- G-conform according IEC 60335-1:2001 chap. 30 UL 94 V-0

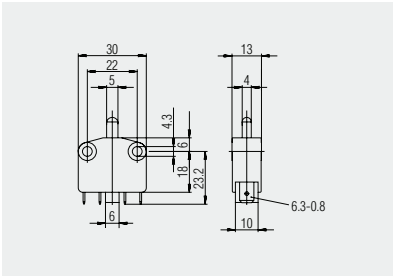
Mechanical life endurance	10E4
Contact resistance (new condition)	< 100 mOhm (1 A 12 V DC)
Insulation resistance (new condition)	> 100 MOhm (500 V DC)
Proof tracking	250 PTI
Protection type	IP 40
Ambient temperature	-40 °C ... +85 °C
Flammability	UL 94 V-0
Glow wire test temperature	850 °C
Material actuator housing terminals	PA glass fiber-reinforced PA glass ball reinforced , black, ultrasonic welded silver plated
Contact material	Ag
Contact distance	> 3 mm < 3 mm
Approval marks	 /  (product-dependend) / 
Suitable for appliances of protection class II under compliance with the installation conditions required on the equipment side	



SERIES 1115 - SINGLE-POLE PUSHBUTTON SWITCHES

TO 16 (4) A 400 V AC

	16 (4) A 400 V AC 1E4	16 (2) A 380 V AC 1E4	12 A 125 V AC 1/6 HP	6 A 250 V AC 1/6 HP	Terminal type	Terminal description	Contact distance (mm)	Operating force (N)	Operating position (OP) (mm)	Difference travel max. (mm)	Free position (FP) max. (mm)	Permissible total travel position (TP) (mm)	Stock version
Normally closed contact (SPNC)													
1115.2101	○		○	○		6.3	> 3	6.0 ± 0.5			15	10.5	○
Normally open contact (SPNO)													
1115.4101	○		○	○		6.3	> 3	6.0 ± 0.5	13.15 ± 0.35		16.25	10.5	○
Changeover switch (SPDT momentary)													
1115.0101		○				6.3	< 3	6.5 ± 1.0	13.5 ± 0.5		15	10.5	○



Quick-connect terminal 6.3 x 0.8

Basic type 1115

ROCKER SWITCHES

PUSHBUTTON SWITCHES

TOGGLE SWITCHES

SLIDE SWITCHES

ROTARY SWITCHES

FOOT SWITCHES

TACT AND KEY SWITCHES

SNAP-ACTION SWITCHES

MICRO-SIGNAL SWITCHES

SENSORS

ECO

PUSH 'N' DRIVE